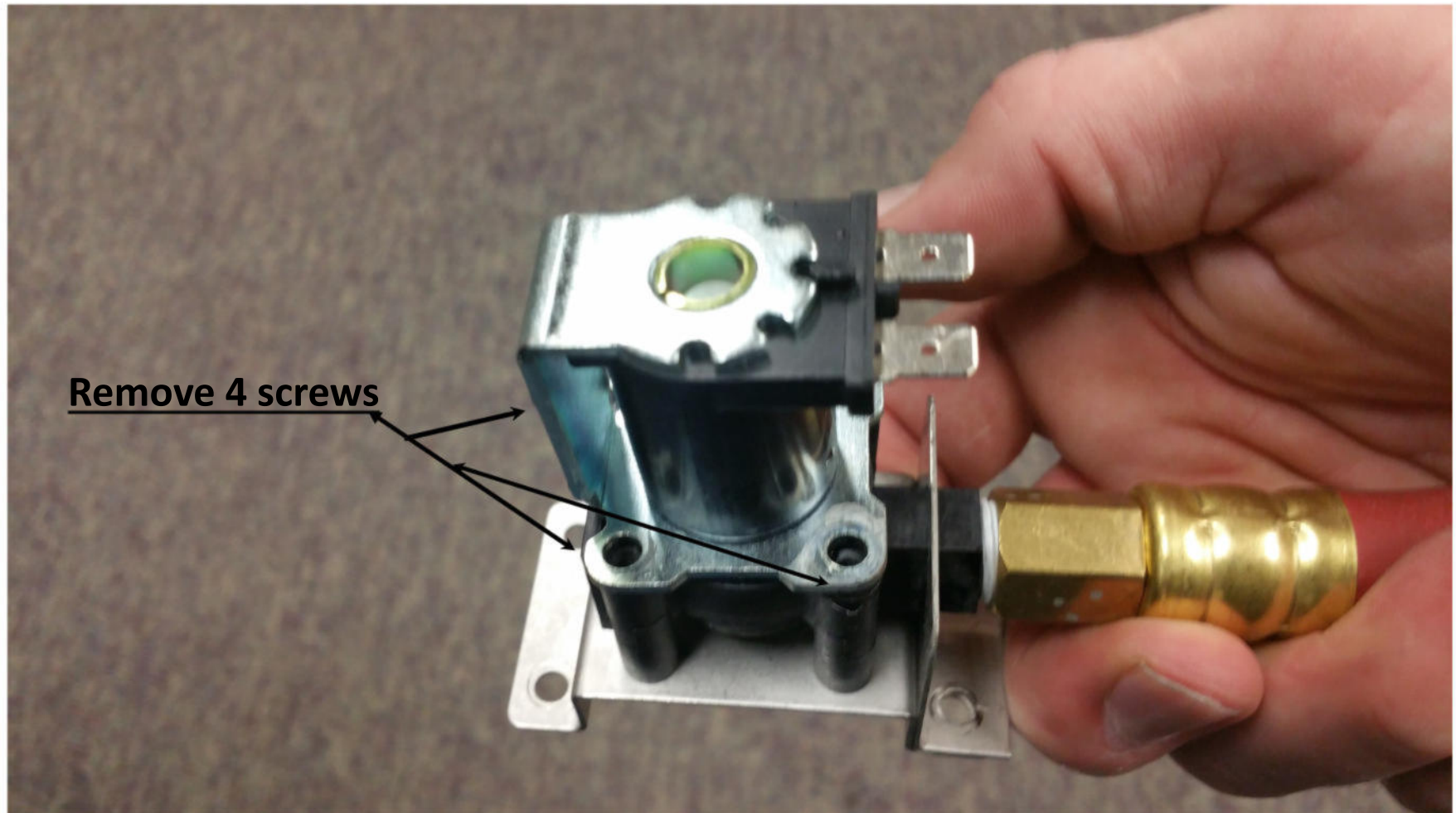


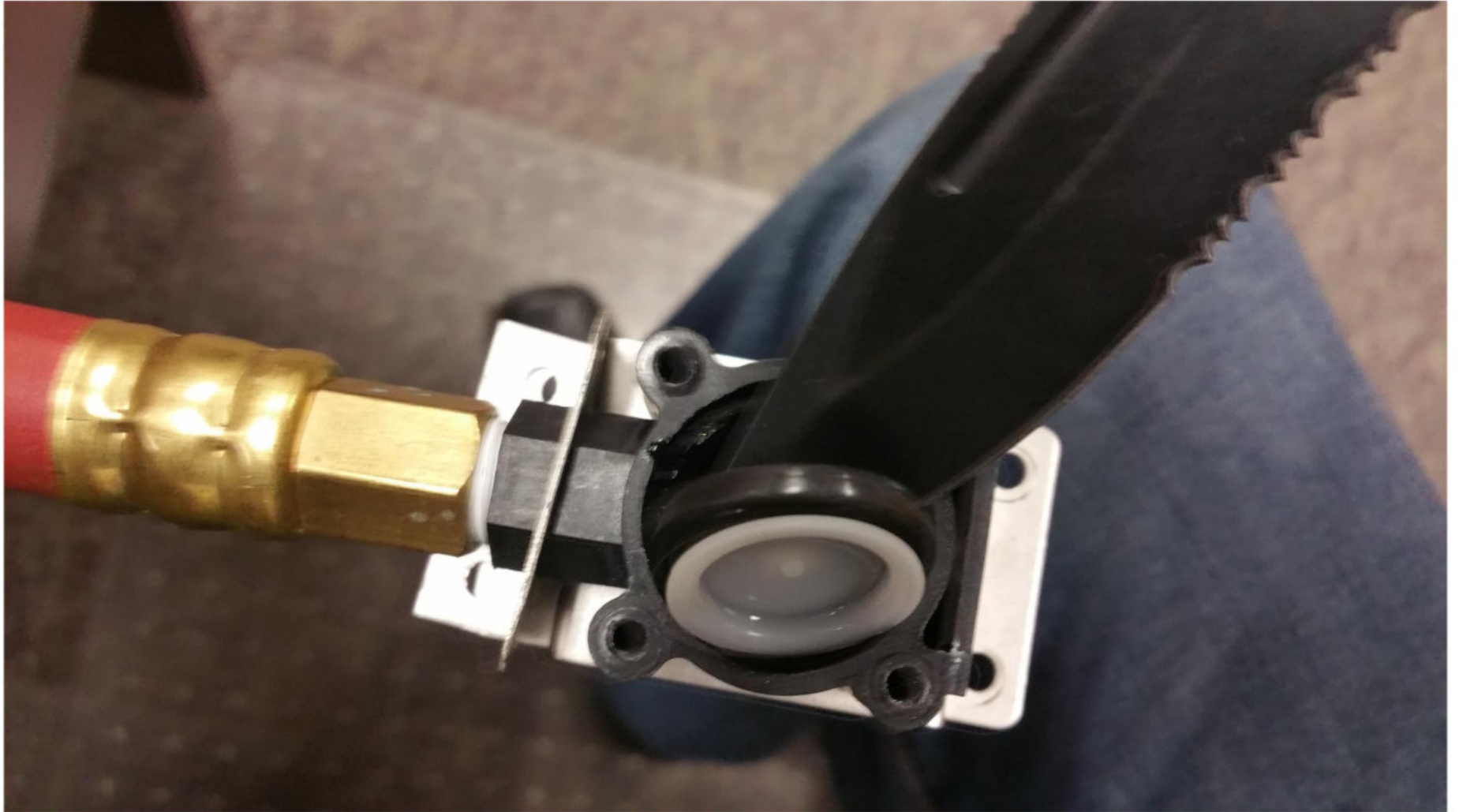
Solenoid Valve Cleaning.





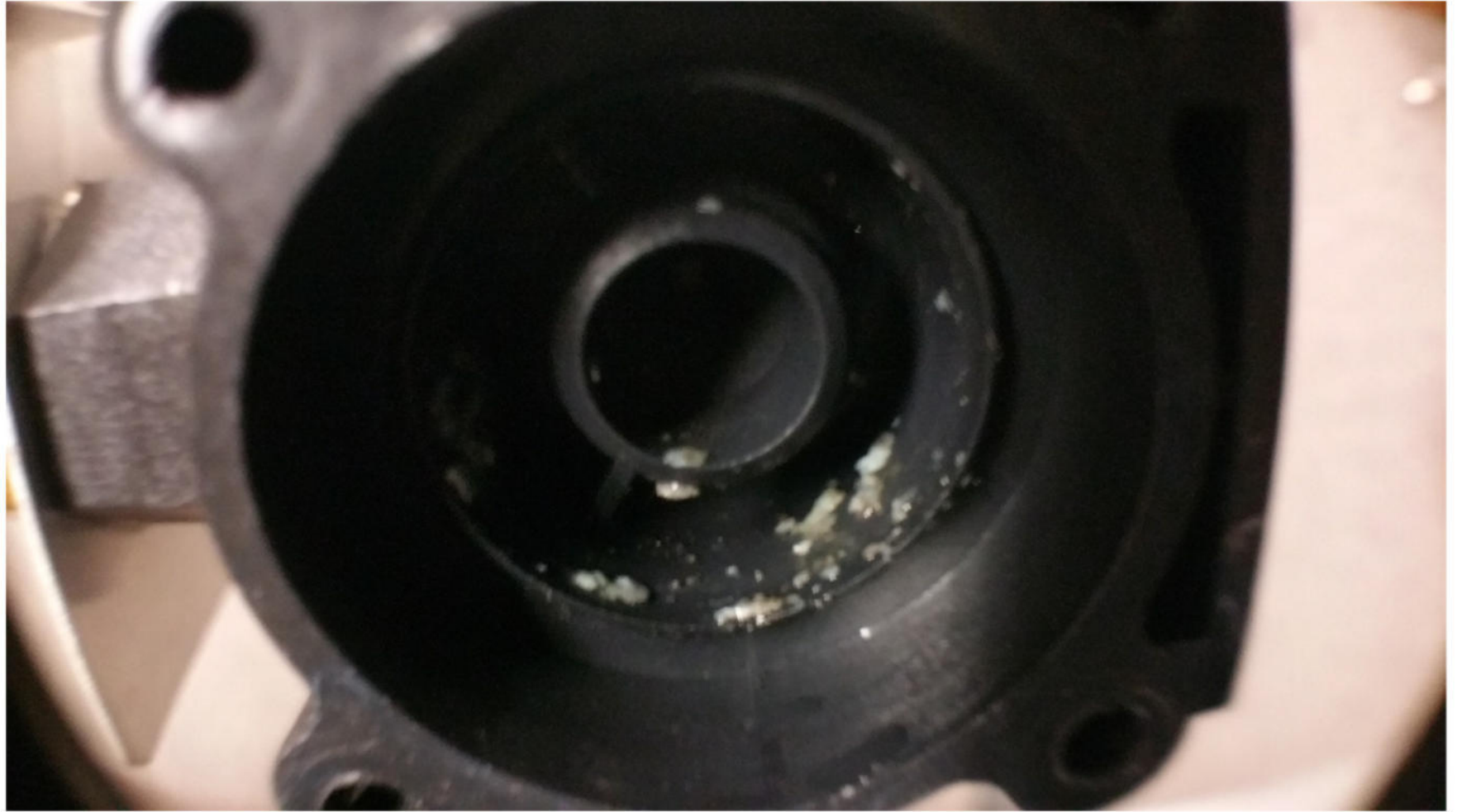
Carefully remove black rubber diaphragm from valve housing.





Note: the mineral deposits (red arrows).—





Flush debris from all internal valve parts.



Ensure that the metering orifice is not plugged.



Final Steps:

- 1. Remove in-line filter.**
- 2. Flush Lines.**
- 3. Re-assemble valve parts.**
- 4. Test valve operation.**